

Casters for Mission-Critical AI Infrastructure

Load Rating (ea.): 350 – 7000 lbs.

These Hamilton Casters have been expressly designed to deliver superior durability and performance for high-load applications across data centers, energy systems, cooling infrastructure, generators, turbines, and heavy industrial equipment. Precision rolling minimizes vibration to protect sensitive electronics and mechanical systems, while optional ESD-safe configurations ensure static control compliance. Maintenance-free design reduces lifecycle costs and downtime risk, enabling design engineers and facilities leaders to specify robust mobility solutions.

Industries & Applications

- Data Center Server Racks
- AI Material Handling Systems
- Power/Cooling Systems
- Generator/Turbine Systems



- Endurance | UltraGlide®**
Load Rating (ea.): up to 1000 lbs.
- CNC machined forgings
 - Small, compact design
 - Wheel Diameters: 3-1/4" - 5"



- Endurance | DuraGlide®**
Load Rating (ea.): up to 1000 lbs.
- CNC machined forgings
 - Small, compact design
 - Wheel Diameters: 3-1/2" - 5"



- Endurance | Nylast®**
Load Rating (ea.): up to 1000 lbs.
- CNC machined forgings
 - Heavy duty cast nylon
 - Wheel Diameters: 3-1/2" - 5"



- Extra Heavy Duty**
Load Rating (ea.): up to 5000 lbs.
- CNC machined raceways
 - Twelve wheel types offered
 - Wheel Diameters: 6" - 12"



- Endurance Dual Wheel**
Load Rating (ea.): up to 1000 lbs.
- Higher loads achieved w/ smaller wheels
 - Provide more stability, load distribution
 - Wheel Diameters: 3-1/4" - 5"



- Extra Heavy Duty Dual**
Load Rating (ea.): up to 7000 lbs.
- Lower height, more capacity
 - Built on EHD platform
 - Wheel Diameters: 6" - 12"





Endurance Stainless

Load Rating (ea.): Up to 750 lbs.

- For sanitary or corrosive environments
- Small, compact design
- Forged Stainless, incredibly durable



Champion Stainless

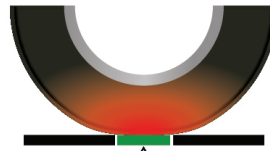
Load Rating (ea.): Up to 3200

- Rugged hot forged swivel construction
- CNC machined raceways
- Wheel Diameters: 4" - 8"

A Tread for Critical AI Infrastructure

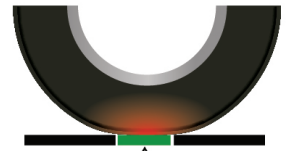
All Hamilton AI Infrastructure polyurethane treads feature a 95(A) dynamic responsive polyurethane specially formulated to run much cooler than other industrial polyurethanes and therefore endure less stress fatigue for longer life. The tread is also designed to minimize any flat-spotting inherent with other conventional polyurethane materials.

- More energy lost to roll the tire
- Higher internal temperature



Common heavy load compound

- Less energy lost to roll the tire
- Lower internal temperature



DuraGlide® poly compound

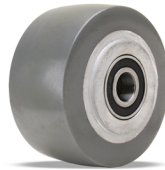
Same Contact Area



UltraGlide® | 2" Wide

Load Rating (ea.): up to 2400 lbs.

- Designed for 24/7 applications
- Twin-wheel minimizes scrubbing while turning
- Integrated precision ball bearings



DuraGlide® | 2" Wide

Load Rating (ea.): up to 1750 lbs.

- Designed for 24/7 applications
- Economic alternative to UltraGlide
- Press-fit bushings to eliminate play & reduce noise



UltraGlide® | 3" - 5" Wide

Load Rating (ea.): up to 6500 lbs.

- Multi-wheel design for higher capacity
- Heavy Duty Die-Cast Aluminum Cores
- Easy turning under heavy loads



DuraGlide® | 3" - 5" Wide

Load Rating (ea.): up to 7700 lbs.

- 1" & 2" thick treads for high loads
- Heavy duty cast iron & forged steel cores
- Press-fit bushings to eliminate play & reduce noise



Nylast®

Load Rating (ea.): 2000 - 30,000

- Heavy duty cast nylon
- Highest capacity in category
- Viable alternative to steel



Scan to learn how Hamilton's casters and wheels support today's hyperscalers.